

Japan Minimum Variance Index NR

Rebalancing Report - 23-Jan-2017

Stock Statistics

The Japan Minimum Variance Index NR rebalances each third Friday of the month. The new composition is implemented at the opening of the next business day after the third Friday - usually the next Monday. The weights are computed using closing prices four days prior to the third Friday. Both the Japan Minimum Variance Index NR and the benchmark S&P TOPIX 150 Index NR are computed in JPY. The calculations in the document are performed by Ossiam using S&P /Datastream source.

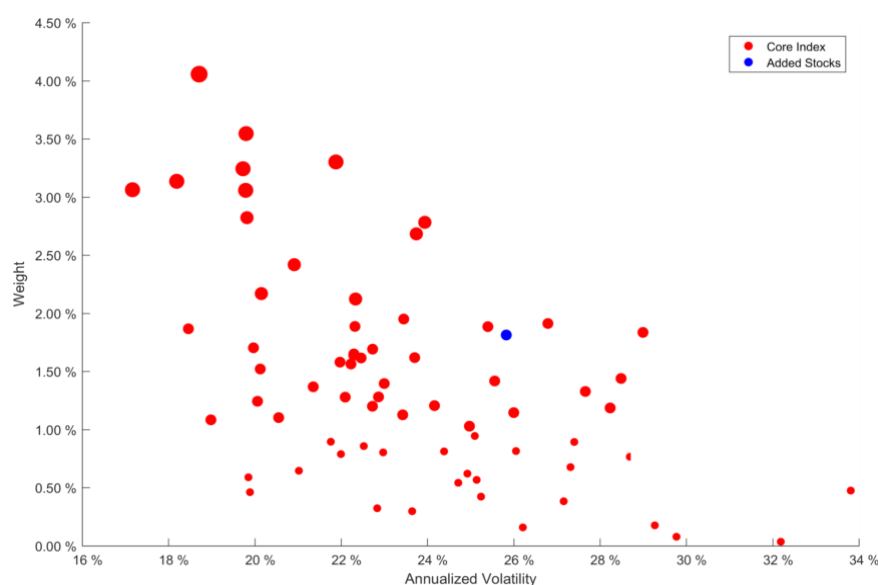
The number of constituents in the index decreased from **75** to **70**. The Turnover is **22.67%**, in line with its historical mean at **23.18%**. The weight of the Index Core Portfolio decreased from **98.61%** to **98.19%**.

Characteristics	23-Jan-2017
Number of Stocks	70
Added Stocks	1
Deleted Stocks	6
Core Number	69
Old weight of Core	98.61%
New weight of Core	98.19%
Turnover	22.67%
Historical Turnover	23.18%

Added and deleted stocks are relative to 23-Jan-2017. The Core is defined as the subset of stocks that belong to the current as well as the previous composition.

Volatility/Weight profile

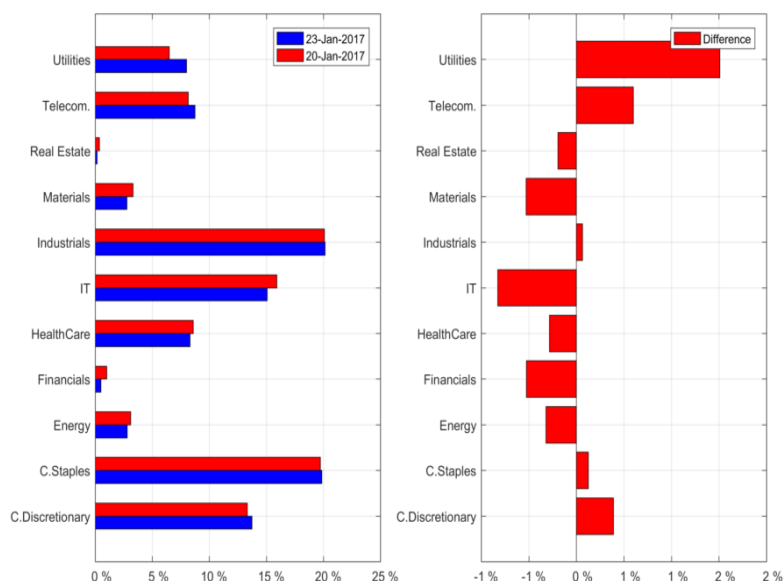
The chart on the right shows the distribution of the new Japan Minimum Variance Index NR composition on 23-Jan-2017 in terms of annualized volatility (x-axis) and weight (y-axis). Volatility computed over 125 days ending on 16-Jan-2017. On the upper left corner we find low volatile stocks with big weight in the index. On the lower right corner we find high volatile stocks with low weight in the index. These stocks usually enter the index for diversification purposes. We distinguish between Core index and added stocks to appreciate how these newly added stock are positioned in terms of volatility and weight.



Sector Allocation

The most significant changes in sector exposures are: **1.51%** for Utilities, **-0.83%** for IT. The biggest sector exposures are: **20.14%** for Industrials, **19.85%** for C.Staples, **15.07%** for IT.

	Close	Open	Difference
C.Discretionary	13.33%	13.72%	0.39%
C.Staples	19.72%	19.85%	0.12%
Energy	3.10%	2.78%	-0.32%
Financials	1.00%	0.48%	-0.53%
HealthCare	8.58%	8.29%	-0.28%
IT	15.90%	15.07%	-0.83%
Industrials	20.08%	20.14%	0.06%
Materials	3.31%	2.78%	-0.53%
Real Estate	0.35%	0.16%	-0.20%
Telecom.	8.14%	8.74%	0.60%
Utilities	6.48%	7.99%	1.51%

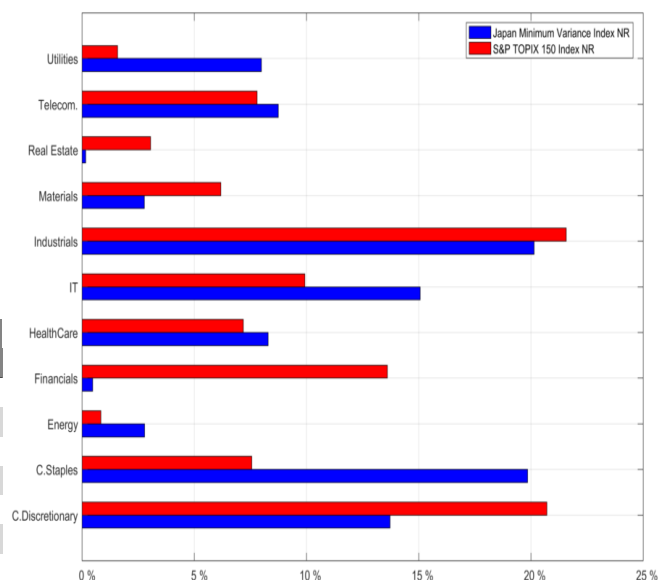


The left-hand side of the chart below shows the sector deviations at rebalancing. Differences are shown on the right-hand side. Index weights are taken as of 20-Jan-2017 (last business day before the new composition is implemented) compared to the new rebalancing weights as of 23-Jan-2017.

Sector breakdown vs. benchmark

The Japan Minimum Variance Index NR overweights C.Staples (**12.29%**) and Utilities (**6.41%**) compared to S&P TOPIX 150 Index NR. The Japan Minimum Variance Index NR underweights Financials (**-13.12%**) and C.Discretionary (**-6.98%**) compared to S&P TOPIX 150 Index NR.

	BE		Diff.	Volatility	
	BE	MV		BE	MV
C.Discretionary	20.71%	13.72%	-6.98%	23.53%	15.74%
C.Staples	7.56%	19.85%	12.29%	17.08%	15.87%
Energy	0.84%	2.78%	1.95%	28.23%	23.94%
Financials	13.60%	0.48%	-13.12%	32.63%	33.81%
HealthCare	7.18%	8.29%	1.11%	21.08%	19.23%
IT	9.93%	15.07%	5.14%	22.44%	17.30%
Industrials	21.57%	20.14%	-1.43%	18.65%	15.52%
Materials	6.19%	2.78%	-3.41%	27.11%	21.53%
Real Estate	3.05%	0.16%	-2.89%	27.35%	26.21%
Telecom.	7.80%	8.74%	0.94%	21.65%	18.85%
Utilities	1.58%	7.99%	6.41%	20.71%	20.33%



The table below shows, for each sector, the weight in the Japan Minimum Variance Index NR (MV), in the benchmark S&P TOPIX 150 Index NR (BE), and their difference. We also show the annualized volatility of each sector in the Japan Minimum Variance Index NR and in the benchmark. Annualized volatilities are computed using 125 business days ending on 16-Jan-2017

Added Stocks

The rebalancing has added 1 new stocks. In the table below, T is the current rebalancing date (23-Jan-2017), while T-1 is the previous rebalancing date (19-Dec-2016). Vol(T-1) and Vol(T) are the annualized volatilities computed over 125 business days ending, respectively, on 12-Dec-2016 and 16-Jan-2017. The average daily volumes ADV(T-1) and ADV(T), expressed in mln JPY, are computed over 50 business days ending on the same dates as before, with the relative ranking over the benchmark S&P TOPIX 150 Index NR. Finally, WW(T) is the stock weight at the current rebalancing date.

	Sector	Vol(T-1)	Vol(T)	WW(T)	ADV(T-1)	ADV(T)	B	LF	EU
KYUSHU ELEC.PWR.CO	Utilities	31.53%	25.83%	1.81%	2104.58 (141)	2667.49 (138)	Y	N	N

The Column B shows whenever the added stock was in the S&P TOPIX 150 Index NR selection as of 19-Dec-2016. The columns LF/EU show whenever the stock was selected by the liquidity filter/eligible universe as of 19-Dec-2016.

Deleted Stocks

The rebalancing has deleted 6 new stocks. In the table below, T is the current rebalancing date (23-Jan-2017), while T-1 is the previous rebalancing date (19-Dec-2016). Vol(T-1) and Vol(T) are the annualized volatilities computed over 125 business days ending, respectively, on 12-Dec-2016 and 16-Jan-2017. The average daily volumes ADV(T-1) and ADV(T), expressed in mln JPY, are computed over 50 business days ending on the same dates as before, with the relative ranking over the benchmark S&P TOPIX 150 Index NR. Finally, WW(T-1) is the stock weight at the previous rebalancing date.

	Sector	Vol(T-1)	Vol(T)	WW(T-1)	ADV(T-1)	ADV(T)	B	LF	EU
INPEXORATION	Energy	41.47%	36.10%	0.06%	7885.05 (61)	7477.22 (64)	Y	Y	Y
MIZUHO FINL.GP	Financials	32.53%	28.93%	0.22%	39657.09 (6)	45454.62 (6)	Y	Y	Y
NIDEC	Industrials	31.65%	24.71%	0.02%	12476.06 (33)	12395.61 (36)	Y	Y	Y
RAKUTEN	C.Discretionary	37.06%	31.42%	0.02%	8568.34 (55)	7902.57 (59)	Y	Y	Y
SEVEN & ICO	C.Staples	27.31%	25.31%	0.36%	12648.42 (30)	12410.82 (35)	Y	Y	Y
YAKULT HONSHA CO	C.Staples	30.55%	24.27%	0.71%	2158.40 (140)	2085.32 (142)	Y	N	N

The Column B shows whenever the deleted stock was in the S&P TOPIX 150 Index NR selection as of 23-Jan-2017. The columns LF/EU show whenever the stock was selected by the liquidity filter/eligible universe as of 23-Jan-2017.

Ranking Index Constituents - Top 25

The table shows the top 25 positions in the Japan Minimum Variance Index NR as of 23-Jan-2017. The column WW indicates the weights in the Japan Minimum Variance Index NR as of 23-Jan-2017. The column Vol gives the annualized volatility computed over 125 business days ending on 16-Jan-2017. We also provide the ranking of these volatilities (Rank Vol) relative to the Filtered Selection at the rebalancing date. The column Corr gives the average correlation of each stock relative to the rest of the filtered selection, computed over 500 business days ending on 16-Jan-2017. We also provide the ranking of these correlations (Rank Corr) relative to the Filtered Selection at the rebalancing date. The Rank Blend is computed as 66% Rank Vol + 34% Rank Corr. The lower the stock's Rank Blend, the higher the likelihood that the stock will be overweighted in the Index. Finally, the column Core shows whether the stock was in the Japan Minimum Variance Index NR already (YES) or it entered at this rebalancing (NO).

	Sector	WW	Vol	Rank Vol	Corr	Rank Corr	Rank Blend	Core
ORIENTAL LAND CO	C.Discretionary	4.06%	18.71%	4	38.07%	6	4	YES
NTT DOCOMO	Telecom.	3.55%	19.80%	8	38.97%	7	7	YES
NIKONORATION	C.Discretionary	3.30%	21.88%	21	42.84%	18	19	YES
NIPPON TELG.& TEL	Telecom.	3.24%	19.73%	6	41.50%	13	8	YES
JAPAN TOBACCO	C.Staples	3.14%	18.19%	2	45.38%	36	13	YES
CANON	IT	3.06%	17.17%	1	57.26%	126	43	YES
LAWSON	C.Staples	3.06%	19.79%	7	34.38%	4	5	YES
AEON COMPANY	C.Staples	2.82%	19.82%	9	43.38%	22	13	YES
JX HOLDINGS	Energy	2.78%	23.94%	44	46.01%	41	42	YES
YAHOO JAPANORATION	IT	2.68%	23.74%	43	41.95%	14	33	YES
KEYENCEORATION	IT	2.42%	20.91%	17	50.03%	63	32	YES
OSAKA GAS COMPANY	Utilities	2.17%	20.15%	15	51.07%	74	35	YES
SONYORATION	C.Discretionary	2.12%	22.34%	29	47.23%	49	35	YES
KDDI	Telecom.	1.95%	23.45%	39	43.32%	20	32	YES
TOKYO ELECTRON	IT	1.91%	26.79%	65	43.99%	24	51	YES
RECRUIT HOLDINGS CO	Industrials	1.89%	22.32%	28	40.88%	11	22	YES
MEIJI HOLDINGS CO	C.Staples	1.89%	25.40%	56	33.49%	3	37	YES
ANA HOLDINGS	Industrials	1.87%	18.46%	3	50.36%	68	25	YES
NITORI HOLDINGS CO	C.Discretionary	1.84%	29.00%	79	33.08%	2	52	YES
KYUSHU ELEC.PWR.CO	Utilities	1.81%	25.83%	59	39.55%	9	42	NO
TAKEDA PHARM.CO	HealthCare	1.70%	19.97%	12	55.57%	107	44	YES
UNI CHARMORATION	C.Staples	1.69%	22.73%	33	44.87%	33	33	YES
KIRIN HOLDINGS CO	C.Staples	1.65%	22.30%	27	44.64%	31	28	YES
JAPAN AIRLINES CO	Industrials	1.64%	22.29%	26	41.05%	12	21	YES
CHUBU ELEC.PWR.CO	Utilities	1.62%	23.71%	41	46.93%	45	42	YES

DISCLAIMERS

This document is of a commercial and not of a regulatory nature.

Ossiam, a subsidiary of Natixis Global Asset Management, is a French asset manager authorized by the Autorité des Marchés Financiers (Agreement No. GP-10000016). Although information contained herein is from sources believed to be reliable, Ossiam makes no representation or warranty regarding the accuracy of any information of which it is not the source. The information presented in this document is based on market data at a given moment and may change from time to time.

This material has been prepared solely for informational purposes only and it is not intended to be and should not be considered as an offer, or a solicitation of an offer, or an invitation or a personal recommendation to buy or sell participating shares in any Ossiam Fund, or any security or financial instrument, or to participate in any investment strategy, directly or indirectly. It is intended for use only by those recipients to whom it is made directly available by Ossiam. Ossiam will not treat recipients of this material as its clients by virtue of their receiving this material.

This material reflects the views and opinions of the individual authors at this date and in no way the official position or advices of any kind of these authors or of Ossiam and thus does not engage the responsibility of Ossiam nor of any of its officers or employees. Past performance is not a guide to future performance. Any opinions expressed herein are statements of our judgment on this date and are subject to change without notice. Ossiam assume no fiduciary responsibility or liability for any consequences, financial or otherwise, arising from, an investment in any security or financial instrument described herein or in any other security, or from the implementation of any investment strategy. This information contained herein is not intended for distribution to, or use by, any person or entity in any country or jurisdiction where to do so would be contrary to law or regulation or which would subject Ossiam to any registration requirements in these jurisdictions. The risks associated with the Fund and the Index are detailed in the “General Risk Considerations” section of the Prospectus, available in English on www.ossiam.com. Investments decision should only be made on the basis of the Prospectus. Investors should also be well informed about the main characteristics of the Index (number of stocks, sector and or country breakdown, past evolution...) in order to have an overview of the risks and opportunities related to an exposure to the Index.

OSSIAM has contracted with S&P Opco LLC, a subsidiary of S&P Dow Jones Indices, to calculate and maintain the JAPAN MINIMUM VARIANCE INDEX NR and the JAPAN MINIMUM VARIANCE EURO HEDGED INDEX NR (the Indices). The Indices are not sponsored by S&P Dow Jones Indices LLC or its affiliates or its third party licensors, including Standard & Poors Financial Services LLC and Dow Jones Trademark Holdings LLC (collectively S&P Dow Jones Indices). S&P Dow Jones Indices will not be liable for any errors or omissions in calculating the Indices. Calculated by S&P Dow Jones Indices and the related stylized mark(s) are service marks of S&P Dow Jones Indices and have been licensed for use by OSSIAM. S&P® is a registered trademark of Standard & Poors Financial Services LLC, and Dow Jones® is a registered trademark of Dow Jones Trademark Holdings LLC.

The Funds based on the Indices are not sponsored, endorsed, sold or promoted by S&P Dow Jones Indices. S&P Dow Jones Indices does not make any representation or warranty, express or implied, to the owners of the Fund or any member of the public regarding the advisability of investing in securities generally or in the Fund particularly or the ability of the Indices to track general market performance. S&P Dow Jones Indices only relationship to OSSIAM with respect to the Indices is the licensing of the S&P/TOPIX 150 Index, certain trademarks, service marks and trade names of S&P Dow Jones Indices and the provision of the calculation services related to the Indices. S&P Dow Jones Indices is not responsible for and has not participated in the determination of the prices and amount of the Fund or the timing of the issuance or sale of the Fund or in the determination or calculation of the equation by which the Fund may be converted into cash or other redemption mechanics. S&P Dow Jones Indices has no obligation or liability in connection with the administration, marketing or trading of the Fund. S&P Dow Jones Indices LLC is not an investment advisor. Inclusion of a security within the Indices is not a recommendation by S&P Dow Jones Indices to buy, sell, or hold such security, nor is it investment advice.

S&P DOW JONES INDICES DOES NOT GUARANTEE THE ADEQUACY, ACCURACY, TIMELINESS AND/OR THE COMPLETENESS OF THE INDICES OR ANY DATA RELATED THERETO OR ANY COMMUNICATION WITH RESPECT THERETO, INCLUDING, ORAL, WRITTEN, OR ELECTRONIC COMMUNICATIONS. S&P DOW JONES INDICES SHALL NOT BE SUBJECT TO ANY DAMAGES OR LIABILITY FOR ANY ERRORS, OMISSIONS, OR DELAYS THEREIN. S&P DOW JONES

INDICES MAKES NO EXPRESS OR IMPLIED WARRANTIES, AND EXPRESSLY DISCLAIMS ALL WARRANTIES, OF MERCHANTABILITY OR FITNESS FOR A PARTICULAR PURPOSE OR USE OR AS TO RESULTS TO BE OBTAINED BY OSSIAM, OWNERS OF THE FUND, OR ANY OTHER PERSON OR ENTITY FROM THE USE OF THE INDICES OR WITH RESPECT TO ANY DATA RELATED THERETO. WITHOUT LIMITING ANY OF THE FOREGOING, IN NO EVENT WHATSOEVER SHALL S&P DOW JONES INDICES BE LIABLE FOR ANY INDIRECT, SPECIAL, INCIDENTAL, PUNITIVE, OR CONSEQUENTIAL DAMAGES, INCLUDING BUT NOT LIMITED TO, LOSS OF PROFITS, TRADING LOSSES, LOST TIME, OR GOODWILL, EVEN IF THEY HAVE BEEN ADVISED OF THE POSSIBILITY OF SUCH DAMAGES, WHETHER IN CONTRACT, TORT, STRICT LIABILITY, OR OTHERWISE.

This material may not be distributed, published, or reproduced, in whole or in part.